

Erie Township 5-Year Park & Recreation Plan 2023 - 2027



Erie Township
Monroe County, Michigan

ERIE TOWNSHIP BOARD OF TRUSTEES

Supervisor- Gary Wilmoth

Clerk- Kimberly Cousino

Treasurer- Cindy Wisbon

Trustee- Steven Mishka

Trustee- Paul Perry

ERIE TOWNSHIP PARK COMMISSION

Jackie Cowdrey

Jennifer Mishka

Darlene Andrzejewski

Melissa Bomia

Diane La Plante

This document prepared with assistance from:

Poggemeyer Design Group, Inc

Updates and revisions made by the Erie Township Park Commission in 2022-2023.

**RESOLUTION TO RECOMMEND
APPROVAL OF THE
ERIE TOWNSHIP PARK AND RECREATION PLAN**

WHEREAS, the Erie Township Parks Commission has prepared an update to Erie Township's Five-Year Parks and Recreation Plan which describes the physical features, existing recreation facilities and the desired actions to be taken to improve and maintain recreation facilities during the period between 2023 and 2028, and

WHEREAS, a draft copy of the plan was made available at the Erie Township Hall and website on March 10, 2023 to provide an opportunity for citizens to review, and

WHEREAS, the Erie Township Parks Commission has also taken steps to obtain community input with respect to the goals, objectives and proposed actions described in the plan using the township web site, and

WHEREAS, the Township Board who will hold a public hearing on this document on May 9, 2023 and then consider approval.

NOW, THEREFORE BE IT RESOLVED the Erie Township Parks Commission hereby recommends adoption of the Erie Township Recreation Plan to the Erie Township Trustees as a guideline for improving recreation for the residents of Erie Township, subject to additional public input.

Yeas: D. La Plante, D. Andrzejewski, M. Bomia, J. Mishka, J. Cowdrey

Nays _____

Absent _____

I, Jacqueline Cowdrey – Park Commission Chair, do hereby certify that the foregoing is a true and original copy of a Resolution adopted by the Erie Township Parks Commission at a meeting thereof, held on the 13th day of April, 2023


Jackie Cowdrey, Chairperson

township board resolution

Community Recreation and Natural Resource Conservation Plan
Erie Township
Monroe County

WHEREAS, the Erie Township Parks Commission is made up of representatives from Erie Township, and

WHEREAS, the Erie Township Park Commission has developed an updated plan as a guideline for improving recreation and enhancing natural resource conservation for the Township of Erie, and

WHEREAS, the Erie Township Parks Commission began the process of updating a community recreation and natural resource conservation plan in 2022 in accordance with the most recent guidelines developed by the Michigan Department of Natural Resources available to local communities, and

WHEREAS, residents of the Township of Erie were provided with an opportunity to review and comment on the draft copy of the plan, which was made available at the Erie Township Hall and website on March 10, 2023, and

WHEREAS, the Erie Township Park Commissioners adopted a resolution to recommend approval of the Erie Township Park and Recreation Plan on April 13, 2023, and

WHEREAS, a final public hearing was held on May 9, 2023 at the Erie Township Hall to provide an opportunity for all residents of the planning area to express opinions, ask questions, and discuss all aspects of the recreation and natural resource conservation plan, and

WHEREAS, after the public hearing, and taking into account all necessary changes, the Erie Town Board voted to adopt said recreation and natural resources conservation plan.

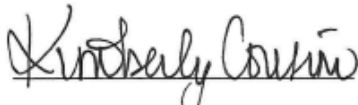
NOW, THEREFORE BE IT RESOLVED: That the Erie Township Board hereby adopts the Erie Recreation and Natural Resource Conservation plan.

Yeas: C. Wisbon, P. Perry, G. Wilmoth, S. Mishka, K. Cousino

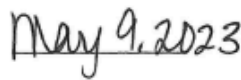
Nays:

Absent:

I, Kimberly Cousino, Erie Township Clerk, do hereby certify that the foregoing is a true and original copy of a resolution adopted by the Erie Township Board at a Meeting held on the 9th day of May, 2023.



Kimberly Cousino, Clerk



Date

ATTEST:



Gary Wilmoth, Supervisor

TABLE OF CONTENTS

INTRODUCTION	5
COMMUNITY DESCRIPTION	7
ADMINISTRATIVE STRUCTURE	12
RECREATION INVENTORY	13
REGIONAL PARK AND RECREATION PLANNING	21
PUBLIC INPUT PROCESS	24
GOALS & OBJECTIVES	25
ACTION PLAN	27
APPENDIX	30
<i>Availability of Draft Plan and Public Hearing Notice - Web Site</i>	<i>31</i>
<i>Public Hearing - Newspaper Notice</i>	<i>32</i>
<i>Erie Park and Recreation Commission Mission</i>	<i>33</i>
<i>Erie Park and Recreation Commission By-Laws</i>	<i>34</i>
<i>2022-2023 Budget</i>	<i>38</i>
<i>Township Board Meeting Agenda.....</i>	<i>39</i>
<i>Transmittal Letters</i>	<i>40</i>

INTRODUCTION

This Park and Recreation Plan was developed to identify existing recreational opportunities and facilities, to consider future recreational needs, and provide direction for the future development of local parks and recreational programs in Erie Township. This plan is regarded as a supplement to the Erie Township Master Plan and is integrated into a larger local planning framework. This document is also considered to be a Community Park, Recreation, Open Space,

and Greenway Plan as defined by the Michigan Department of Natural Resources (MDNR). MDNR provides financial assistance to local governments through its recreation grants programs. Assistance is available for both acquisition of land for parks and open space, or in terms of developing existing recreation facilities. To be eligible to apply for certain grants, a community must have an approved, five-year recreation plan on file with the Grants Management Office of MDNR.

This Erie Township 5-year Park and Recreation Plan updates a previous document covering the years 2013 – 2017 and fully replaces that document adopted in early 2013. Park and recreation issues are also addressed to a limited degree in the current Township Master Plan, but this document provides a more complete and thorough effort to define local recreational needs, opportunities and goals.

Planning Process

This 5-year Park and Recreation Plan was prepared with input from a variety of sources. The Erie Park Board met several times in the fall of 2017 to review and consider local needs. Discussions about local recreation needs also occurred at both the Erie Township Planning Commission and Board of Trustees meetings while the plan was under development. To provide an opportunity for more focused dialog about park and recreation needs in Erie Township, a public planning workshop was held on January 3, 2018 at the Erie Township Hall. This event was advertised in the local newspaper and it was advertised on the Erie Township website (see Appendix). It was billed as an opportunity for the public to collaboratively discuss the need for updated goals, new potential projects and long-term priorities.

On January 10th, 2018, the Park Board also met to consider and reflect on public input before producing a draft document for public review and consideration on January 12, 2018. This draft plan was made available for public review and comment for more than 30 days before it received formal consideration by the Erie Township Board at its regular public meeting on February 13, 2018.

PLAN REVIEW AND UPDATES

The park commission reviewed the current plan and made revisions and updates in 2022 - 2023.

COMMUNITY DESCRIPTION

Erie Township is a local political jurisdiction organized under Michigan law and this Park and Recreation Plan addresses facilities and needs related to its approximately 4,300 residents (according to the 2020 census). Erie Township is located at the far southeast corner of the State next to Lake Erie and its southern border is also the Michigan/Ohio border. Erie Township's northern border is shared with LaSalle Township and its western border is shared with Bedford Township. The City of Luna Pier, located east of I-75 was once part of Erie Township, but it incorporated as a separate municipality in the 1960s.



Erie Township is the first Michigan community northbound motorists encounter on I-75

The purpose of this section is to factually describe Erie Township and provide related insights into local park and recreation needs. As such, only the characteristics that most directly influence future park and recreation needs are discussed and presented herein.

Natural Landscape

Like many areas along the western Lake Erie shoreline, Erie Township is very flat. Soil conditions are generally well suited for agriculture, especially when drainage improvements are provided. Similarly, urban development activity also often requires measures to overcome soil wetness in terms of building foundations and on-site wastewater treatment facilities. Much of Erie Township was cleared many years ago for farming, and therefore much of the landscape consists of open productive agricultural fields.

Erie Township also includes Turtle Island which is located several miles off shore in Lake Erie to the east. Turtle Island is a small island that is privately owned. Lake-related erosion has reduced the size of this island in recent decades and this property contains the ruins of the Turtle Island Lighthouse which ceased operations in 1904.

Southeast Erie Township Showing Lake Erie, Erie Marsh Area and I-75 Corridor



Hydrology

Surface waters in Erie Township include the Lake Erie coastline which forms the eastern boundary as well as a network of waterways that generally flow in an easterly direction to Lake Erie. The largest river in Monroe County is the River Raisin which is several miles north of Erie Township. East of I-75, the Lake Erie coastal area is generally characterized as low-lying wetlands and marshes. Low water levels on Lake Erie have exposed more dry land in recent times.

Fish and Wildlife Resources

Wildlife resources are an important feature of Erie Township. The Erie State Game Area is located along the Lake Erie Shore and east of I-75, just north of the State Line. In total, the Erie State Game Area includes more than 3,200 acres and it extends out toward Lake Erie to include the Woodtick Peninsula. The Erie State Game Area is managed for wildlife conservation by the MDNR Wildlife Division.

Along with the Erie State Game Area, the Nature Conservancy owns the 2,200-acre Erie Marsh Preserve. This area includes coastal wetlands, agricultural fields and open water. The Nature Conservancy manages this property with the Erie Shooting and Fishing Club who retain a hunting lease on the property. Ducks Unlimited is also involved in projects in this area to improve habitats for waterfowl. These coastal marshes provide habitat for a wide range of wildlife, including endangered or threatened species.

In 2006, Erie Marsh Preserve became a privately-owned component of the Detroit River International Wildlife Refuge. The Detroit River International Wildlife Refuge was established in 2001 as North America's first International Wildlife Refuge. It includes islands, coastal wetlands, inland marshes, shoals, and riverfront lands along 48 miles of the Detroit River and western Lake Erie. Erie Marsh Preserve is managed through a collaboration of The Nature Conservancy, U.S. Fish & Wildlife Service, and other partners.

Western Lake Erie is a popular spot for birds and bird-watchers in North America. The forests, grasslands, marshes and mudflats along the shoreline provide food and roosting areas for millions of birds during spring and fall migration. Fishing is also a significant wildlife related recreational pursuit. Lake Erie is especially noted for its walleye and perch fisheries. A large number of the charter fishing boats operating in the Great Lakes are based in Lake Erie; most of those are in the western basin.

Forested Areas & Woodlots

A majority of Erie Township was cleared for farming many years ago. A few woodlots and forested areas remain today and dot the landscape. For the most part, these wooded areas represent areas where soil conditions and/or wetness issues made farming more difficult. Forested areas are also found east of I-75 and are associated with wetlands and marshes along Lake Erie.



Common landscape features in Erie Township

Land Use

Data from the Southeast Michigan Council of Governments (SEMCOG) illustrates the rural nature of Erie Township. This data is about ten years old, but it shows more than two-thirds of the Township is devoted to agricultural land uses, park, recreation and open space, or water. These latter categories of land use relate to extensive tracts of land east of I-75 associated with the Erie Marsh as previously mentioned. This also explains why Erie Township includes almost 20 percent of Monroe County's park, recreation and open space-related land uses.

	Acres	Acres
Agricultural/Rural Residential	10,156.9	265,532.6
Multiple-family residential	1.9	722.4
Mixed Use	6.6	747.9
Retail	68	2,447.5
Office	0.9	741.5
Hospitality	19.6	780.7
Industrial	50.9	4,049
Institutional	167.2	2,771.2
Cemetery	13.7	330
Park, recreation, and open space	1,384.8	7,402.1
Parking	0.6	79.3
Transportation, Communication, and Utility	826.4	7,512
Water	206.2	4,460.6
Mobile Home	89.3	1,403.6
Vacant	441.9	16,204.1
Not Parceled	1,520.5	11,618

Source: SEMCOG

<https://semcog.org/community-profiles/communities=5035#Land>

Transportation

Erie Township's road network is dominated by three parallel regional thoroughfares cutting across the Township in a southwest to northeast direction. These include Interstate 75 which travels generally parallel to the Lake Erie shoreline connecting Detroit with Toledo. Telegraph Road (U.S. 24) also connects Detroit to the north with Toledo to the south. South Dixie Highway (M-125) originates just north of the City of Monroe and travels southwest to Toledo. These three highways provide comparatively good accessibility to and from the Township. In addition, U.S. 23 is within nine miles of the Township's western border, linking Ann Arbor with Toledo. Local county roads complete the roadway system providing both access to adjacent property and general vehicular circulation.

Rail is also an important consideration in Erie Township. The Chesapeake and Ohio Railroad operates a rail line adjacent to Telegraph Road and both The Grand Trunk Western Railroad and

Norfolk Southern Railroad operate lines adjacent to one another (generally parallel to and within ½ to 1 ½ miles of I-75).

Tourism

Monroe County is home to a strong tourism industry, and much of this activity relates to outdoor recreation. The marinas and boat ramps on Lake Erie attract fishermen, and hunters are drawn to the coastal wetlands, especially in the fall. Bird watchers and other nature enthusiasts are also commonly attracted to view the large numbers of resident and migratory birds. Area history, particularly as it relates to the War of 1812, is also a draw and a growing number of tourists who are now visiting the River Raisin Battlefield site in Monroe. This site was recently brought under the Management of the National Park Service. The Monroe County Convention & Tourism Bureau recently updated its website content, and a fuller and more complete listing of area attractions is now available. The web site is - www.monroeinfo.com.

Demographic Characteristics

Erie Township has been stable in terms of population change. While the number of housing units increased in the past, the population has declined slightly along with the average size of each household. This drives the demand for housing units as more units are needed to house fewer people in each unit. This partially explains the increase in housing units in a community with population decline.

Population and Households	Census 2020	Change 2010-2020	Pct Change 2010-2020	SEMCOG EST 2045
Total Population	4,299	-218	-4.8%	4,285
Group Quarters Population	10	5	100%	0
Household Population	4,289	-223	-4.9%	4,285
Housing Units	1,980	11	0.6%	-
Households (Occupied Units)	1,800	19	1.1%	1,855
Residential Vacancy Rate	9.1%	-0.5%	-	-
Average Household Size	2.38	-0.15	-	2.31

Source: U.S. Census Bureau and SEMCOG Community Profiles
<https://semcog.org/community-profiles/communities=5035#People>

Future population is projected to remain stable in Erie Township in the coming decades. Naturally, many factors determine population change, but current projections developed by SEMCOG indicate that Erie Township will have about the same number of residents in 2045 as currently reside in the Township. This is contrasted somewhat with more growth county-wide.

Change 2015-45	Change 2015-45
-------------------	-------------------

	2015	2020	2025	2030	2035	2040	2045	Num.	Per.
Monroe Co.	148,998	149,123	150,525	152,790	154,850	156,166	156,274	7,276	4.9%
Erie Twp.	4,624	4,398	4,437	4,431	4,311	4,335	4,285	-339	-7.3%

Source: SEMCOG Community Profiles.

<https://semcog.org/community-profiles/communities=5999>

<https://semcog.org/community-profiles/communities=5035#People>

Household composition in Erie Township is also changing as more and more households include seniors who are 65 years old or older. Between 2010 and 2020 there was a 6.7% increase in the number of households with seniors present. This mirrors a national trend and a similar drop in the numbers of households without children. These demographic changes suggest shifting demand for community services, and provide implications regarding future needs for specific types of recreational facilities.

	Census 2010 2000	Census 2020 2010	Pct. Change 2000-2010	SEMCOG 2045
Household Types				
With seniors 65+	476	508	6.7%	969
Without seniors	1,305	1,205	-7.7%	886
Two or more persons w/o children	796	801	0.6%	975
Live alone, 65+	170	146	-14.1%	270
Live alone, under 65	273	216	-20.9%	230
With children	542	550	1.5%	380
Total Households	1,781	1,713	-3.8%	1,855

Source: SEMCOG Community Profiles

<https://semcog.org/community-profiles/communities=5035#People>

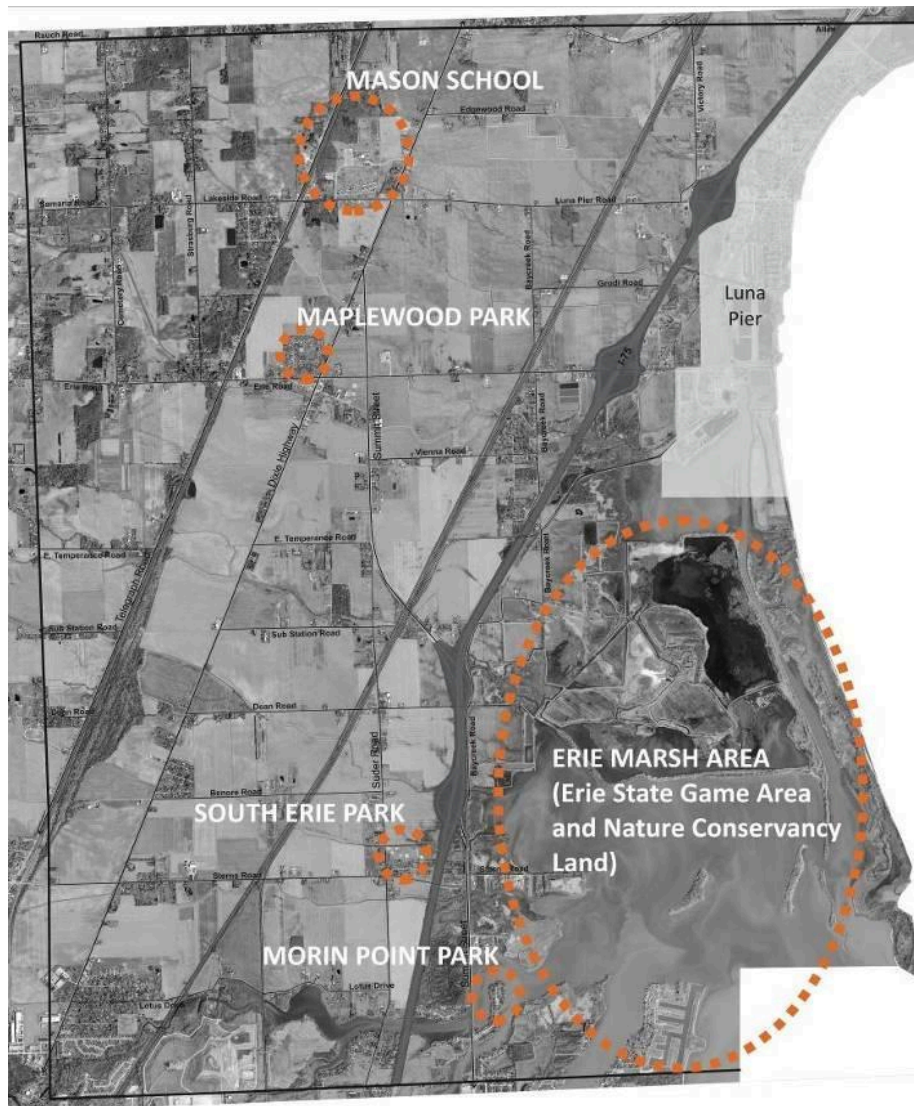
ADMINISTRATIVE STRUCTURE

The Erie Township Park Commission is a five-person body created pursuant to the Township Parks and Places of Recreation Act (157). It is responsible for acquisition and management of parks and recreational facilities on behalf of Erie Township. Meetings are held monthly and the Park Commission utilizes funds appropriated from the Township Board. The 2022-2023 Budget

for the Parks Commission is about \$88,000 and major budget items include repair and maintenance, improvements and equipment (the complete 2022- 2023 budget is provided in the Appendix). The Park Commission works closely with other Township officials and schedules usage of recreational facilities, such as ball diamonds during the seasons. The Erie Township Park Commission does not have any full-time employees and relies heavily on volunteers to help maintain facilities. The Erie Township Parks Commission also maintains a strong relationship with the Mason School District.

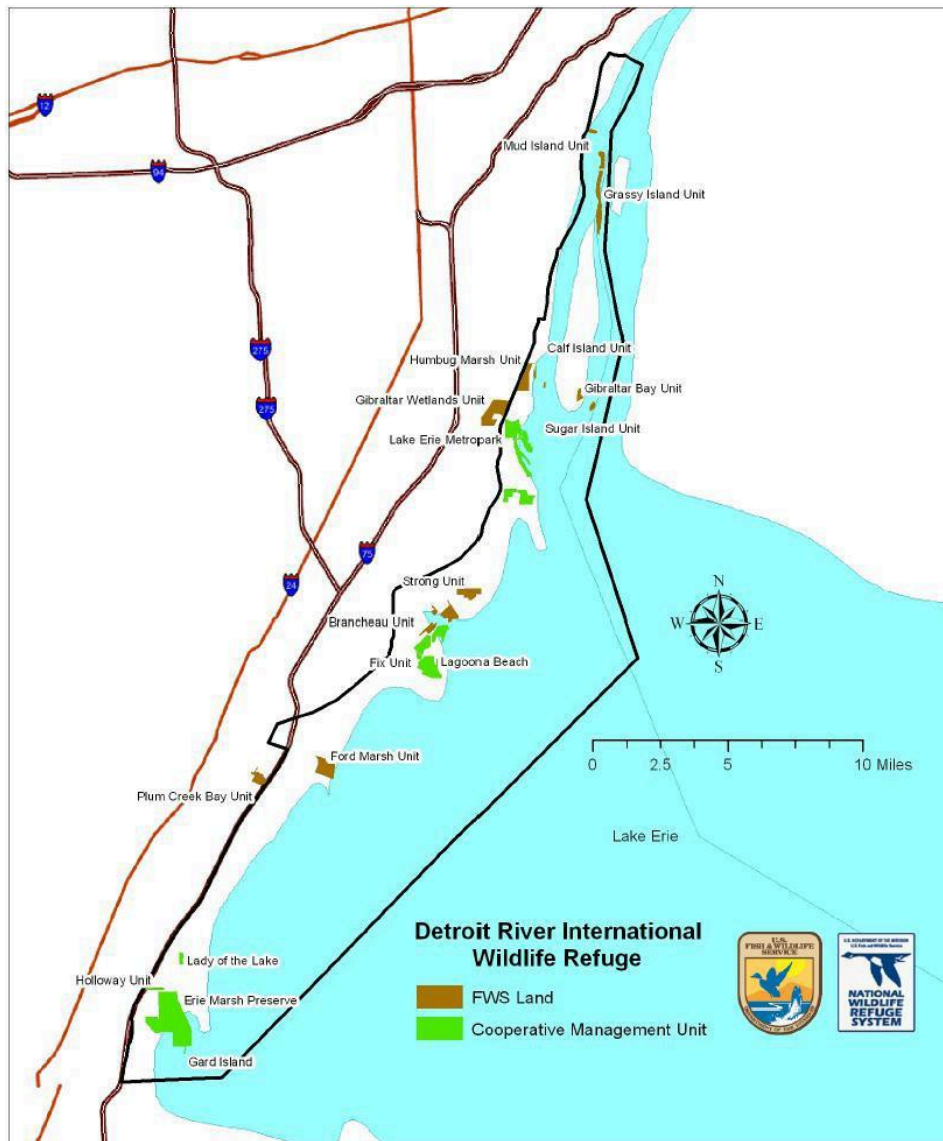
RECREATION INVENTORY

Before considering future needs, an updated inventory of existing recreational facilities in Erie Township was assembled and is presented below. Also, to help illustrate the locations of major facilities, the following map is presented.



Federal Sites

The Detroit River International Wildlife Refuge (DRIWR) is the only International Wildlife Refuge in North America. It includes islands, coastal wetlands, marshes, shoals, and waterfront lands along 48 miles of Detroit River and Western Lake Erie shorelines. DRIWR extends into Monroe County and into Erie Township. The "Holloway Unit" which is a slice of the Erie Marsh and Erie State Game Area, a cooperative unit with The Nature Conservancy and the 19-acre Gard Island Unit which is managed cooperatively with the University of Toledo.



State Sites

The Erie State Game Area encompasses a large area in Monroe County and extensive acreage in Erie Township. This area is managed for species such as mallards and wood ducks, osprey and deer. The DNR Wildlife Field Office is at 37205 Mouillee Road, Rockwood, MI 48173. The Erie State Game Area does include a boat launch on a 2.9 acre site, called the Halfway Creek Access

Site. This site is located at the end of Algonquin Street, just east of Summit Street in southeast Erie Township. This access site is designed for smaller boats and the parking lot is not paved.



Aerial View of
the Erie Marsh
Area

Lake Erie

Private/Non-Profit

The Nature Conservancy is a private non-profit corporation working around the world to protect ecologically important lands and waters. The Nature Conservancy was founded in 1951 and currently has more than one million members. As noted previously, the Nature Conservancy owns the 2,200-acre Erie Marsh Preserve. The Nature Conservancy acquired this property through a donation from the Ottawa Bay Development Company in 1978. As part of the terms of the donation, land is leased for waterfowl hunting in the fall and owns cottages at the southern end of the preserve. For safety reasons, the preserve is closed from September 1 through December 31 each year during waterfowl hunting season. In 2011 and 2012, The Nature Conservancy implemented a large-scale restoration project within the Erie Marsh to provide better fish access, to improve water management capacity, increase wetland quality and control invasive plants.



School Facilities

Mason Consolidated Schools includes a Senior High School, a Middle School and Central Elementary. All three facilities are located at 2400 Mason Eagles Drive in Erie, Michigan. The Mason School Campus is about 115 acres in size and includes multiple recreational facilities.

Mason School Facilities



St. Joseph Catholic School is located in Erie and is a private parochial school with some recreational facilities. St. Joseph Church and School has a long local history in the community with roots that go back to 1826 when doors first opened. School facilities were open intermittently after that date. Most recently, St. Joseph was reopened in 1979 with classes for Kindergarten through Grade 2, and in subsequent years, more grades were added. This yearly expansion continued and now there are Kindergarten to Grade 8 classes. Further, a Pre-kindergarten was added in 1986 and a Pre-school was added in 1992. A gymnasium and dining hall were added to the school in 1994.

Indoor recreation facilities include a regulation-size gym, locker rooms, new scoreboards, additional practice basketball nets, new volleyball apparatus, and easy access to the kitchen for concession stand. Outdoor facilities included baseball, softball, and soccer fields, new scoreboards, dugouts, concession stand with electricity, ample parking for parishioners, visitors, sports teams, and tournaments.

Erie Township Facilities

Erie Township has three recreational facilities.

- o South Erie Park is 18.1 acres in size and offers a playground, shelter, walking trail, ball diamonds and picnic sites. South Erie Park was upgraded recently with the aid of an MDNR Recreation Passport Grant which funded projects such as ball field improvements, a walking trail and new pavilion.
- o Maplewood Park is 4.1 acres and offers a playground, ball diamond, basketball courts, picnic area, and covered pavilion.
- o Morin Point Park is 1.6 acres in size and offers a playground and pavilion.

An accessibility evaluation for each of the three parks is provided below. Resources provided in MDNR's *Guidelines for the Development of Community Park, Recreation, Open Space, And Greenway Plans* were reviewed in the context of these three parks. Specifically, each facility was compared to the 2010 ADA Standards for Accessible Design and ranked from 1-5. The value of 1 relates to a condition wherein none of the site elements meet 2010 ADA Standards for Accessible Design. The value of 3 relates to the condition wherein most site elements meet 2010 ADA Standards, and 5 relates to meeting the Principles of Universal Design.

- o **South Erie Park.** The western parking lot was resurfaced several years ago and recent upgrades to South Erie Park (with MDNR funding) enhanced accessibility, specifically in terms of signage, drinking fountains and the new pavilion. Enhancements to the trail surface allow for greater mobility and access to natural areas and wheelchair spaces at ball fields are needed, along with more extensive accessible routes to fields and play areas. South Erie Park is rated as a #3
- o **Maplewood Park.** Maplewood Park has several ADA issues requiring attention. Specifically, these include a better accessible route to play areas, improved surface systems under the play areas, and wheelchair spaces at ball fields. Maplewood Park is rated as a #2
- o **Morin Point Park.** This small park is largely unimproved with recreational facilities and it has fewer ADA issues. However the playground surface systems and access to the pavilion could be improved to provide a more accessible route. Morin Point Park is rated at a #2

Prior MDNR Grant Awards

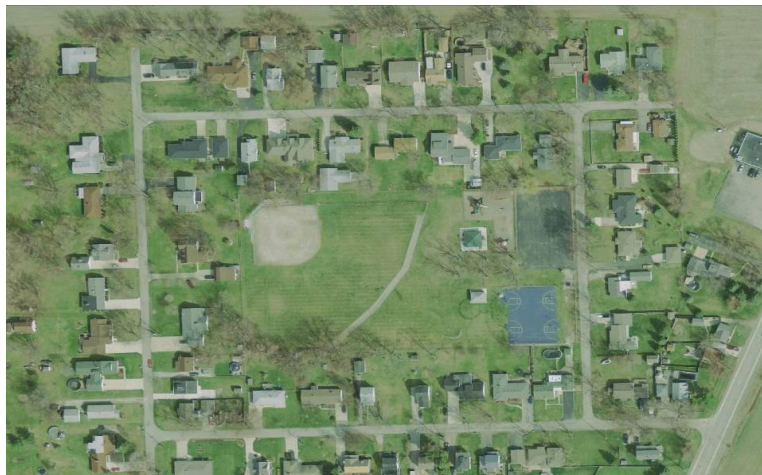
Three MDNR grants have been provided in the past. All have been completed and closed out.

Year	Project #	Project	Status
1972	26-00363	Acquire 8.4 Acres at S. Erie Park	Complete / Grant Closed
1977	26-01023	Develop a portion of South Erie	Complete / Grant Closed
2013	RP13-458	Replacement of existing pavilion and shed, waterline extension, ball field upgrade & trail improvements.	Complete / Grant Closed

South Erie Park



Maplewood Park



Morin Point Park

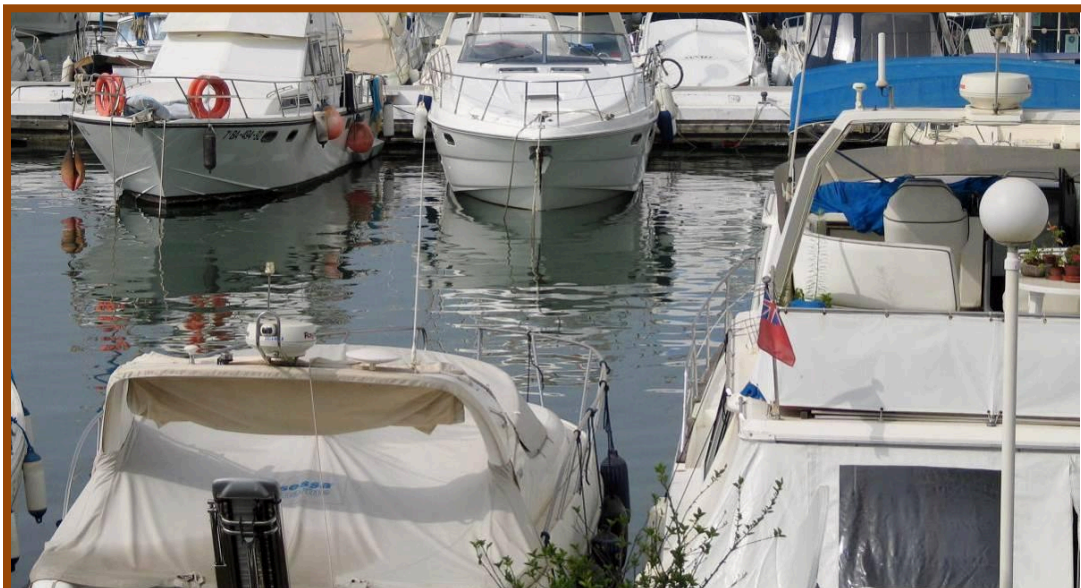


Marinas

Because of its location on Lake Erie, Erie Township has several marinas. Combined, these marinas provide more than 400 boat slips. Additionally, the Luna Pier Harbour Club (in Luna Pier) has nearly 400 slips.

Blair's Marina	80
Bay Harbor Marina	100
Folden Marina	150
Halfway Marina	39
Lost Peninsula Marina	600

Source: Monroe County 5-Year Recreation Plan 2013 – 2017 & PDG



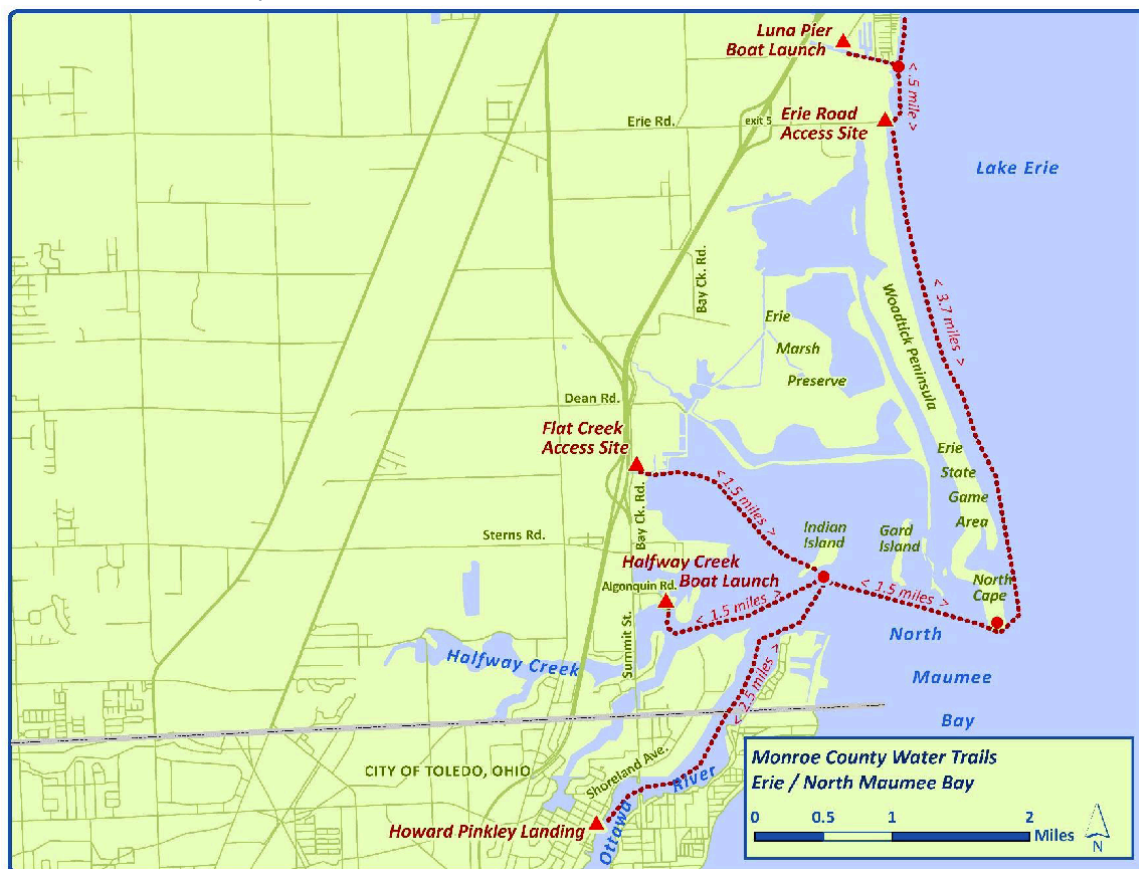
Sportsman Clubs

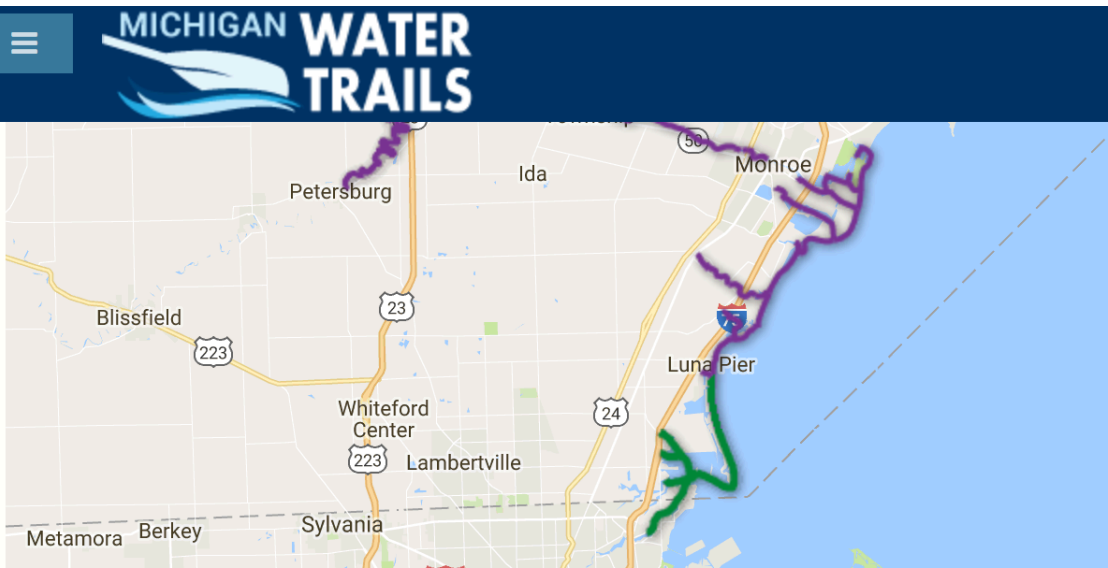
The Mudjaw Bowman Lodge is located at 6240 Benore Road and it is a private archery club. Mudjaw Bowman is affiliated with organizations such as the Michigan Bow Hunters, Michigan United Conservation Clubs, National Field Archery Association, Ohio Archers Association, Ohio Bowhunters Association and USA Archery. Mudjaw Bowman was founded in 1953 and reported to be the oldest known private archery club in Southeast Michigan and Northwest Ohio. The site is located on 24 acres of land and includes a woods, stream, two archery ranges, a large clubhouse, storage building, and practice area. There is an outside covered patio area with picnic tables that is used for meetings and other club activities.

REGIONAL PARK AND RECREATION PLANNING

Erie Township is part of a larger region and plays a role in the development of a regional park and recreational system. First and foremost, Erie Township is part of Monroe County. In July, 2014, Monroe County produced a Water Trail Master Plan. This work was funded by a grant from Michigan's Coastal Zone Management Program (CZMP). It was focused on providing a framework for water trails in the area and to assist local communities maximize rivers and coastlines for recreation and community and economic development. Notably, a water trail is shown in Erie Township, connecting existing boat ramps, destinations in and near the City of Luna Pier, the City of Toledo, and Woodtick Peninsula as shown below.

Source: Monroe County Water Trail Master Plan





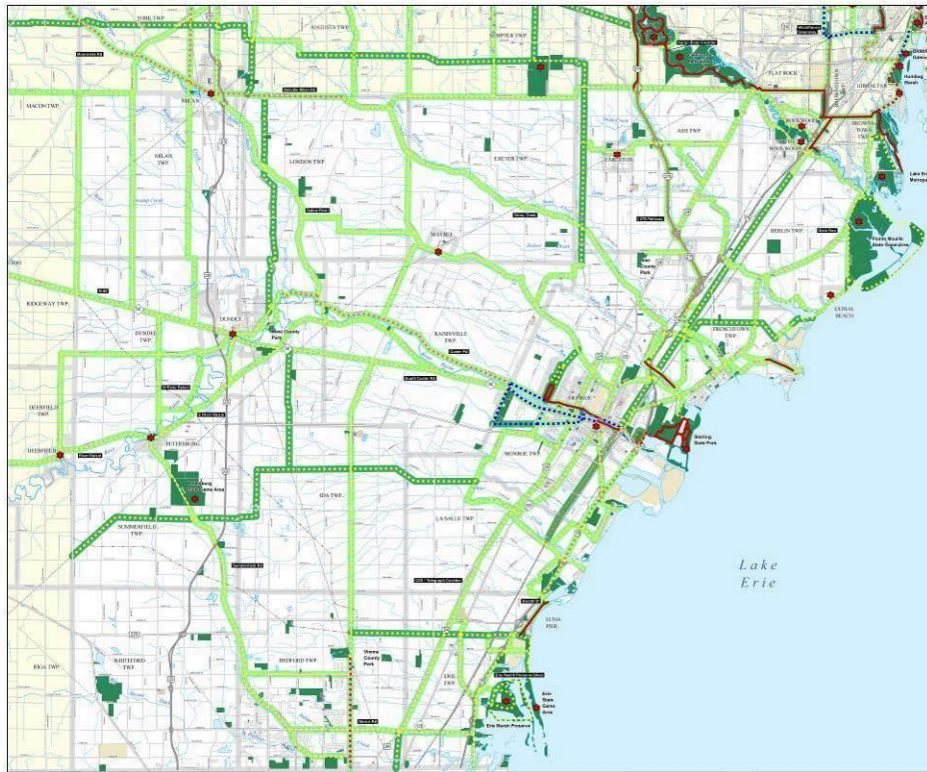
Water trails in Erie Township are similarly included in material published on the Michigan Water Trails Website (www.michiganwatertrails.org) as shown below. This material was generated by The Michigan Great Lakes Water Trails Working Group.

Source: www.michiganwatertrails.org

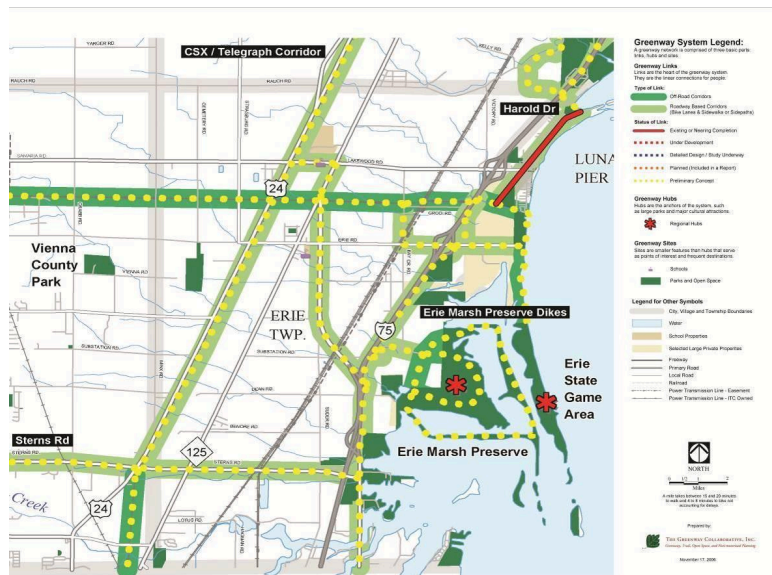
Other regional planning has occurred in Southeast Michigan. These regional recreational planning efforts include the following:

The Southeast Michigan GreenWays Initiative

The Southeast Michigan GreenWays Initiative is a comprehensive effort to define Greenways throughout all of Southeast Michigan. One product of this effort was to develop and refine a regional vision of linked trails and greenways. This plan does indicate potential for both off-road and on-road corridors (bike lanes & sidewalks or side paths) in Erie Township that would help link greenway hubs (the anchors of the greenway system, such as large parks and major cultural attractions), greenway sites (smaller features than hubs that serve as points of interest and frequent destinations, such as schools and local parks). This plan highlights interesting potential projects that can be considered more fully with greater local involvement.



Erie Township Enlargement



ACCESSIBILITY ASSESSMENT

Erie Township Parks should be used by persons, regardless of their disability status. Erie Township fully intends to update play areas, outdoor developed areas, parking areas, and other facilities to comply with requirements of the Americans with Disabilities Act (ADA). In large part, this can be accomplished as equipment and facilities are repaired and replaced.

It is also understood that there are opportunities to design improvements to meet “Universal Access.” Universal access goes beyond meeting ADA requirements and strives to make parks more usable by all people. Universal Design offers a framework for design that supports the widest range of people with various physical abilities.

As described previously, there are many areas where the three parks in Erie Township can be improved to support greater accessibility. The largest needs are thought to be in the areas of mobility.

PUBLIC INPUT PROCESS

Erie Township encourages resident participation in all forms of community planning. In 2011, Erie Township updated its Master Plan and sought community engagement through public meetings, surveys and formal public hearings. As part of this process, residents were asked a variety of questions pertaining to growth and development. This information provided a platform for good land use decision-making.

The prior effort to prepare the previous 5-year Recreation Master Plan (2013) included a survey of township residents. That survey yielded 30 responses and some notable conclusions from the survey included the following:

- A clear majority of residents are either somewhat satisfied, or very satisfied with existing park facilities and recreational opportunities.
- Recreational facilities deemed to be most important include playground equipment, hard surface courts (basketball, tennis), non-motorized trails, ball diamonds, and picnicking areas.
- The most desired improvements include picnic areas / pavilions, playgrounds and tot lots, and non-motorized trails.

- Residents recognize the importance of the proximity to Lake Erie and they encourage the development of facilities that support nature-related activities such as bird/wildlife viewing, fishing, and kayak/canoe trails.

For this Recreation Master Plan update, the Erie Township Recreation Board decided to hold a planning workshop on January 3, 2018. This workshop was advertised on the township web site and in the local newspaper. It was thought that this kind of event would provide more opportunity for constructive dialog and a fuller exchange of ideas.

GOALS & OBJECTIVES

A review of five-year goals and objectives were developed as a product of conversations at the planning workshop on January 3, 2018 and with the Erie Township Recreation Board and Erie Township Board of Trustees. As part of these discussions, characteristics of existing park and recreational facilities were compared with new perspectives gained from this planning process. Members of the Erie Township Recreation Board have met regularly for several years to discuss both long and short-term plans for developing adequate recreational facilities. This plan, and particularly the following goals, represents the result of these discussions that set a framework for future actions.

Goal 1: Maintain and enhance existing facilities.

- o Support the development of each Township Park to its full potential.
- o Maintain existing facilities with regular and sustained efforts to make sure equipment and facilities have a long useful life.

Goal 2: Preserve the natural features of the Township.

- o Encourage public, private and non-profit efforts to preserve woodlands, wetlands, and other natural areas.
- o Develop partnerships with other public and private organizations engaged in conservation efforts.

Goal 3: Continue to develop the long-range strategy for acquisition and development of new parks, preserves, public access, and recreation facilities.

- o Continue to update this recreation plan every 5 years, and more often if necessary, to maintain continued relevance and significance.
- o Anticipate the needs of the changing community and structure programs and facilities accordingly.

Goal 4: Continue to develop a long-range strategy for acquisition and development of new greenways, multi-use trails and linkages between recreation facilities.

- o Continue to explore opportunities for multi-use trails, bike paths, bike lanes, and other linkages both locally and within a regional context.
- o Wherever possible, link existing or planned multi-use trails, bike paths, bike lanes and facilities.
- o Work with Monroe County and surrounding local governments on the planning and development of new greenways, multi-use trails and linkages – especially as they help create connections between recreation facilities.
- o An evolving image of connecting recreation facilities is expressed within the following graphic titled – Erie Active Recreation Loop. This planning concept relates to a series of improvements that will take years to fully implement and will continue to be refined and developed in the years ahead.

Erie Active Recreation Loop (EARL) Planning Concept (*Draft*)



Goal 5: Develop funding mechanisms for maintenance and management for these outdoor recreation facilities.

- o Identify the likely costs associated with the maintenance and management of existing facilities.
- o Identify all potential funding tools that could be used in developing financial strategies.
- o Apply regularly to the MDNR for state grant funds for land acquisition and outdoor recreational development and improvement funds.

Goal 6: Improve communication and coordination between agencies involved in public access and use of public lands for recreation.

- o Seek and develop cooperative relationships with other public and private organizations.

ACTION PLAN

This section establishes a five-year plan for the capital investments required to support the specific goals and objectives outlined above. The following table represents the specific actions and recommended projects to be accomplished during the five-year planning horizon. This action plan should be viewed as being flexible as it contains many more projects than can be reasonably expected to be completed. Unknowns such as grant funding availability, land availability, project feasibility and many other factors will determine what specific steps can be taken in the future. Several projects do not yet have a set time frame or funding sources and cost estimates are provided without the benefit of detailed design or a clear definition of all project elements. Further, the list does not represent a priority or ranking among projects as opportunities to complete various project elements are dependent on a wide range of variables.

2023-2028 Action Plan

Project	Project Elements	Estimated Costs
Maplewood Park	Exercise course, ball diamond upgrades, bleachers, lighting, restroom upgrades, band shell, ice rink, bleachers, storage shed replacement, trees, tree trimming and signage upgrades.	\$50,000 – \$100,000
	Resurface basketball courts and incorporate a pickle-ball court.	\$20,900


Project	Project Elements	Estimated Costs
South Erie Park	South Erie Park received a number of upgrades in 2014 funded in part by MDNR Recreation Passport Funding. Remaining improvement needs include ball field lighting, signage upgrades, construction of permanent restrooms connected to an on-site septic system. A sledding hill and/or water feature are potential improvements.	\$25,000 – \$100,000
Bay Creek Road	Kayak launch and/or wildlife viewing deck. Kayak launch connecting to a defined water trail. This would be a collaborative effort with MDNR.	\$50,000 – \$75,000
Erie Mason School Nature Trail	Creation of nature trail on or adjacent to school property. Trail elements include natural trail surface (crushed stone or wood chips), interpretative signage and benches. Opportunities exist to partner with the school to develop educational project components and to construct associated improvements. A trail could also include fitness workout stations.	\$50,000 – \$100,000
Create Active Recreation Loop with bike lanes/walking paths (Bay Creek, Sterns, Dixie (or Telegraph), Luna Pier Rd.)	Create a non-motorized transportation loop connecting Maplewood, South Erie Parks, Erie Mason Schools, Erie Marsh area and local population centers.	Per mile costs vary per local conditions and design (paved shoulders vs. separate bike path, etc.)
Morin Point Park	Repair or replace existing recreational equipment.	\$5,000
Cooperative Ventures with non-profit and/or private conservation groups that relate to Natural area preservation.	TBD based upon opportunities that may present themselves. While Erie Township could act unilaterally, opportunities to partner with the Nature Conservancy, land trusts, or private conservation groups may present themselves in the future. Ongoing work elements will include identification of and evaluation of sites and habitats worthy of preservation that help to establish a township-wide system of natural areas with high conservation value.	TBD – depending on project details.
Dog Park	The potential to develop a dog park in Erie Township is recognized and is tied to site-specific opportunities.	TBD

Project	Project Elements	Estimated Costs
Habitat Improvement Projects	Convert appropriate areas from turf grass to native vegetation to support wildlife populations. Projects may include partnerships with state or local conservation organizations.	TBD
Community Center	Erie Township does not have a local community center to house indoor community gatherings and events. Such a facility could be located in either South Erie Park or Maplewood Park, or perhaps on public property elsewhere in the township. Such a project could be a collaborative venture with the local VFW or a senior group.	\$75,000 – \$125,000
Public Information	Create website, logos, maps and programs	\$15,000

APPENDIX



Erie Township

Departments ▼ Meetings ▼ Services Township Information Fire Dept. Police Dept. Contact Us 



Erie Township Parks & Recreation DRAFT Plan & Notice of Hearing

A draft copy of the Erie Township Parks and Recreation plan is available here: [Draft Park Plan 2023-2027](#)

There are also copies available at the Erie Township Hall. Comments can be sent to Erie Township Clerk Kim Cousino at kcousino@erietownship.com or mail to Erie Township Hall, PO Box 187, Erie, MI 48133

A public hearing will be held on Tuesday, May 9, 2023 at 7:00 p.m. to receive comments on the proposed Parks and Recreation Plan.

Township web page announcing draft park and recreation plan availability and notice of public hearing.

Public Notice of Public Hearing in Monroe Evening News

LOCALiQ

Petoskey News-Review
The Monroe News | Holland Sentinel
Gaylord Herald Times | Daily Telegram

PO Box 630491 Cincinnati, OH 45263-0491

PROOF OF PUBLICATION

Kim Cousino
ATTN CLERK
Erie Township
PO BOX 187
ERIE MI 48133

STATE OF MICHIGAN, COUNTY OF MONROE

The Monroe News, a newspaper published in the English language for the dissemination of local or transmitted news and intelligence of a general character and legal news and which is a duly qualified newspaper, published and circulated in the County of Monroe. The annexed notice is a printed copy contained in said newspaper, and has been duly published in said newspaper in the issue dated:

04/21/2023

Sworn to and subscribed before on 04/21/2023

Legal Clerk

Notary, State of MI, County of Brown

My commission expires

Publication Cost: \$104.55

Order No: 8717531

Customer No: 576079

PO #:

of Copies:
1

THIS IS NOT AN INVOICE!

Please do not use this form for payment remittance.

**Notice of Plan Availability
for Public Review and
Comment and Notice of
Public Hearing**

**Erie Township 2023-2027
Recreation Plan**

A draft five-year Recreation Plan for Erie Township is available for public review and comment. This Plan is required to remain eligible for MDNR grant funding.

Anyone interested in reviewing the document may obtain a copy at the Erie Township Office, or at

www.ErieTownship.com

Written comments may be sent to Kim Cousino, Erie Township Clerk, 2065 Erie Rd., PO Box 187, Erie, MI 48133 or to

kcousino@erietownship.com

The Erie Parks Commission recommended this plan for adoption at its regular meeting held on April 13, 2023.

The Erie Township Board will hold a public hearing at its regularly scheduled meeting on May 9, 2023 at 7:00 p.m. at the Erie Township Hall.

Following the public hearing, the Township Board will decide to approve the plan as is, or make changes based on comments and feedback. If approved, Erie Township's 2023-2027 Recreation Plan will be submitted to the Michigan Department of Natural Resources.

Publish: April 21, 2023

Erie Park and Recreation Commission Mission

Erie Township Park Commission

2065-Erie Road, Erie MI 48133

BY-LAWS

MISSION STATEMENT

It is the mission of the Erie Township Park Commission to provide the residents of this township a safe and well maintained area for the children and adults to enjoy the outdoors. We will strive to make our parks the best that we can.

Erie Park and Recreation Commission By-Laws

PROTOCOL

The Erie Township Park Board will be composed of five (5) members who are elected to a four (4) year term. Members must be residents of Erie Township and sworn into office within ninety days of the election.

A. The chairperson and secretary shall be elected for the four (4) year term by the Park Board commissioners.

B. Subcommittees may be set up, at any time, by the chairperson as deemed necessary.

C. The chairperson shall conduct the business of the commissioners. In the absence of the chairperson the secretary shall assume the duties of the chairperson. The chairperson shall appoint a member, or third party, to record the minutes of the meetings.

D. Commissioners are expected to attend all meetings. If a commissioner misses three (3) consecutive meetings, a letter asking the Commissioners intent for future meetings will be sent. If the Commission is not satisfied with the response, or no response is received, the Commissioner will be considered resigned from the commission.

DUTIES

A. Once the Park Commission has been established, following the election of members,

chairperson and secretary the Township Board ceases to be the Park Commission, with the exception of park board accounting functions. B. The Park Commission has the authority to acquire, maintain, manage, and control township parks and recreational facilities. It may accept, on behalf of the township, gifts, grants, and devises of land suitable for the purpose of parks and places of recreation. In addition, the Park Commission may accept gifts and monies for the improvement of parks and recreation.

C. The members of the Park Commission shall be paid as determined by the Compensation Committee.

D. The Park Commission may employ clerical assistance, and incur other expenses as required to carry out its function, providing there is adequate funding in the budget.

E. The Park Commission is authorized to submit requests to the voters at the township meetings for issuance of township bonds for the acquisition of lands for township parks and places of recreation. A three-fifths (3/5) majority vote is required to approve requested bonds.

F. All borrowing of funds must be approved by the Erie Township Board and the Michigan

Municipal Finance Commission.

G. The Park Commission, after approval by the Township Board, is given the authority to sell and convey, at appropriate terms, any portions of land acquired which are not appropriate for park and or recreation purposes.

MEETINGS

A. All regular meetings will be held on the second Thursday of each month. Special meetings will be called by the Commission Chairperson.

B. A quorum of three (3) commissioners is required to conduct a meeting.

C. In the event of inclement weather, or emergency, the chairperson has the authority to change local, cancel or modify the meeting method. All changes will be posted on the township website, at the Township Hall, and reasonable attempts to notify commissioners will be made.

BUDGET

A. The Park Commission must submit an annual proposed budget to the Township Board on or before April 30th of each year.

HIRING

A. Job descriptions for any Parks Commission employment vacancies will be submitted to the Township Clerk for the purpose of publishing the vacancies in the Erie community.

B. The Park Commission reserves the right to hire and dismiss Park Commission employees.

C. Any employee dismissal must be by a super majority vote. Super majority consists of four (4) commissioners.

PURCHASING

A. All Park Commission expenditures will be ordered by the Township Clerk or Treasurer.

B. All expenditures must be approved by the Park Board Chairperson before submitting to the Township Clerk or Treasurer for payment.

MISCELLANEOUS

A. The Park Commission may maintain their own mailbox for bills and correspondence.

B. Current Park Commissioners will be granted fee free the use of one park or shelter house per calendar year.

Jackie Cowdrey, Park Commission Chairperson – adopted by commission on December 9, 2021

PARK COMMISSION BUDGET

05/01/2023 09:29 AM		BUDGET REPORT FOR ERIE TOWNSHIP		Page:	1/1
User: KCOUSINO					
DB: Erie Twp					
Calculations as of 04/30/2023					
GL NUMBER	DESCRIPTION	2022-23 ORIGINAL BUDGET	2022-23 ACTIVITY THRU 04/30/23		
Fund: 101 GENERAL FUND					
APPROPRIATIONS					
Dept 751 - RECREATION COMMISSION					
101-751-702.000	PARK MAINTENANCE SALARIES	8,000	2,968		
101-751-715.000	SOCIAL SECURITY	850	343		
101-751-725.000	PARK COMMISSION FEES PER DIEM	3,000	1,520		
101-751-740.000	OPERATING SUPPLIES	1,000	859		
101-751-817.000	CONSULTANT	1,000			
101-751-860.000	TRANSPORTATION	600	342		
101-751-900.000	PUBLISHING & PRINTING	250			
101-751-921.000	ELECTRIC	1,800	903		
101-751-927.000	WATER	700	523		
101-751-930.000	REPAIR & MAINTENANCE	40,000	27,196		
101-751-930.810	R & M MORIN POINT EAST TWP SAD SH	5,800	5,564		
101-751-930.816	R & M-MAPLEWOOD TWP SAD SHARE	5,000	4,800		
101-751-976.000	PARK IMPROVEMENTS	15,000	2,140		
101-751-977.000	PARK EQUIPMENT	5,000	392		
Totals for dept 751 - RECREATION COMMISSION		88,000	47,550		
TOTAL APPROPRIATIONS		88,000	47,550		
BEGINNING FUND BALANCE		1,471,508	1,471,508		
ENDING FUND BALANCE		1,383,508	1,423,958		

Township Board Meeting Agenda

TOWNSHIP BOARD

ERIE TOWNSHIP

Erie, Michigan

Regular Meeting & Public Hearing

May 9, 2023

AGENDA

7:00 P.M.

A. CALL TO ORDER- ROLL CALL- PLEDGE OF ALLEGIANCE

B. RECOMMENDED ACTION (consent agenda)

1. Minutes Approval from April 11, 2023 Regular Meeting
2. Building Report; April 2023
3. Treasurer's Report; April 2023
4. Revenue & Expense; April 2023
5. Police Report; April 2023

C. CORRESPONDENCE

1. Michigan Gas Utilities
2. Charter Communications
3. Consumers Energy
4. Monroe County Equalization Department
5. Monroe County Drain Commissioner
6. DTE Electric Company
7. Erie Fire Department calls to date

D. PUBLIC COMMENT

E. BUSINESS:

1. Bills Approval
2. Public Hearing: Erie Township Five Year Park & Recreation Plan
3. Resolution to Adopt the Erie Township Five Year Park & Recreation Plan
4. Delta Dental Insurance Renewal
5. Michigan Association of Panning Membership
6. Quote from Irwin Concrete Leveling
7. Repairs for Police Interceptor – 2011 Chevrolet Tahoe
8. Morin Point Fire Department – Brandon Royston and Nathan Lampe – Promoted to Firemen
9. Short Term Rentals
10. APRA Funds Discussion

Transmittal Letter to Monroe County Planning



GARY WILMOTH
SUPERVISOR
KIMBERLY COUSINO
CLERK
CYNTHIA WISBON
TREASURER
STEVE MISHKA
PAUL PERRY
TRUSTEES



2065 Erie Road
P.O. Box 187
Erie, Michigan 48133-9808



Phone: 734-848-5915
Fax: 734-848-2548
WEB: ERIETOWNSHIP.COM

May 24, 2023

Monroe County Planning Department
125 East Second Street
Monroe, MI 48161

RE: Erie Township Park and Recreation Plan, Monroe County

Dear Staff,

Erie Township is sending you a copy of the Erie Township five-year Park and Recreation Plan (2023-2027). This plan was prepared in 2018 with the assistance of Poggemeyer Design Group. In 2022 the Erie Township Park Commissioners began reviewing and updating the plan. The plan was approved and adopted by the Erie Township Board on May 9, 2023.

If you have any questions regarding the plan, please feel free to reach out to me at 734-848-5915, ext. 2.

Sincerely,

Kimberly Cousino
Erie Township Clerk

Transmittal Letter to SEMCOG



GARY WILMOTH
SUPERVISOR
KIMBERLY COUSINO
CLERK
CYNTHIA WISBON
TREASURER
STEVE MISHKA
PAUL PERRY
TRUSTEES



2065 Erie Road
P.O. Box 187
Erie, Michigan 48133-9808



Phone: 734-848-5915
Fax: 734-848-2548
WEB: ERIETOWNSHIP.COM

May 24, 2023

Southeastern Michigan Council of Governments
1001 Woodward Ave. Suite 1400
Detroit, MI 48226

RE: Erie Township Park and Recreation Plan, Monroe County

Dear Staff,

Erie Township is sending you a copy of the Erie Township five-year Park and Recreation Plan (2023-2027). This plan was prepared in 2018 with the assistance of Poggemeyer Design Group. In 2022 the Erie Township Park Commissioners began reviewing and updating the plan. The plan was approved and adopted by the Erie Township Board on May 9, 2023.

If you have any questions regarding the plan, please feel free to reach out to me at 734-848-5915, ext. 2.

Sincerely,

Kimberly Cousino
Erie Township Clerk